



HEAVY FABRICATION. BLASTING. PAINTING. HEAT TREATING. QUENCHING.

Ranked #1 Fabrication Company  
2017 Reader Rankings – The Daily Reporter

*A successful family owned and operated, heavy duty,  
one-stop fabrication job shop!*

**FABRICATION / HEAT TREATING / QUENCHING /  
SHOT PEENING / BLASTING / PAINTING / MACHINING**

## BUILDING & LIFT CAPACITY

Steelwind Industries' facility offers over 100,000 square feet of manufacturing space including 10 overhead cranes with lifting capacity up to 100 tons in each bay (2 bays).

## HEAVY FABRICATION

Steelwind offers complete fabrication capabilities from raw processing to finished product including flame cutting, beveling, sawing, certified welding and inspection, machining, heat treating, blasting and painting.

### Welding Capabilities

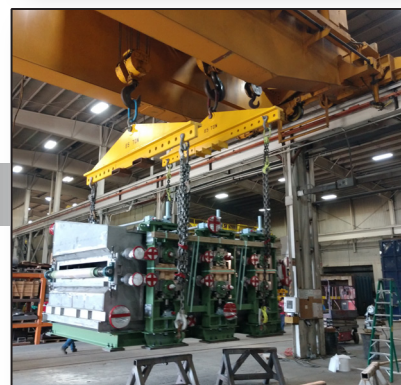
- Heavy Plate Welding
- MIG, TIG, Fluxcore, SMAW, GMAW
- Subarc — Automatic & Manual
- Specialty Metals
- Forging and Castings Repair Welding
- In house Certified MT/PT Level II
- NDT Available
- Preheat Welding
- Certified Welder to AWS D1.1, D1.2 & D1.6
- Certified Welding Inspectors (CWI's) to ASW D1.1 on staff

**Multiple Weld  
Positioners & Manipulators  
up to 60,000 pounds**

**Cutting Capabilities —  
Multi-Torch Oxy Plasma Table  
up to 12" thick carbon  
up to 1-1/8" thick SS**

**HYD-MECH Vertical  
Mitering Band Saw**

- Please visit [SteelWindIndustries.com](http://SteelWindIndustries.com) for specific capacities



## HEAT TREATING, NORMALIZATION, ANNEALING, QUENCH & TEMPER

Steelwind offers Certified Heat Treat ovens with fully programmable controls and digital chart recorders equipped for up to 32 thermocouples. Furnace controllers calibrated quarterly.

### Furnace 1

12'W x 12'H x 20'L  
• 2200 Degree F Capability

### Furnace 2

15'W x 17'H x 40'L  
• 500,000 lbs Capacity  
• 2250 Degree F Capability

### Furnace 3

14'W x 14'H x 70'L  
• 500,000 lbs Capacity  
• 1600 Degree F Capability

### Furnace 4

12'W x 12'H x 24'L  
• 150,000 lbs Capacity  
• 1400 Degree F Capability

### Furnace(s) 5&6

8'W x 7'H x 10'L  
• 1400 Degree F Capability

### Furnace 7

8'W x 8'H x 10'L  
• 1650 Degree F Capability

**\*TWO HUGE water and polymer quench tanks to accommodate parts up to 20' in length**

[SteelWindIndustries.com](http://SteelWindIndustries.com)

Toll Free: 1-877-STELWND | Voice: (414) 571-6000 | Fax: (414) 571-6061

AISC CERTIFIED | IAS ACCREDITED | NACE CERTIFIED INSPECTORS | AWS CERTIFIED INSPECTORS | ISO 9001 COMPLIANT

## BLASTING - Every Variety of Blasting

Commercial, Brush, Near White, and White profiles using steel grit, shot, glass bead, garnet or other combinations per our customer specifications and requests. Calibrated testing equipment and NACE certified inspectors on staff to ensure adherence to strict customer specifications.

**(3) Manual Bays up to 55' L x 17' W x 15' H**

**(2) Automated Blast machines allow for quick turnaround and cost effective pricing.**

- Wheelabrator Rotating Table Blast (10' Diameter Table)
- 60' Pass Through Horizontal Blastec (Opening accommodates 8' W x 1.5' H)
- SSPC - QP3 Certified



## PAINTING

Steelwind provides coating services using Zinc, Epoxy, Urethane, Enamel, Tank lining, Metallic Coatings, Ceramic Coatings, Heat Cured Coatings, and all other Liquid Applied Coatings per customer specifications. Whether you require a single or multi-coat system, our experienced staff can meet your needs.

**Large 80' W x 200' L Cross Flow Paint Area - 16,000+ sq. ft.**

**HVLP, Airless, Conventional, & Electrostatic**

**Certified Digital Mill Gauges and Recording System**

**NACE Certified inspectors on staff**

**SSPC - QP3 Certified**

**AISC Sophisticated Paint Endorsement**



## MACHINING

Steelwind offers CNC machining utilizing a combination of boring bars, milling and drilling centers. Visit our website for complete details of our machining capabilities.

## SHOT PEENING

NADCAP Certified Shot Peening Level II, included but not limited to J442, J443, AMS-2430 and AMS-2431.

## CONTACT US FOR INFORMATION OR QUOTES

Randy Bruch - *President / Owner* - [randy@steelwindindustries.com](mailto:randy@steelwindindustries.com)

Angie Trentadue - *Vice President* - [angie@steelwindindustries.com](mailto:angie@steelwindindustries.com)

Andy Trentadue - *Operations Manager* - [andy@steelwindindustries.com](mailto:andy@steelwindindustries.com)

Shannon Braatz - *Relationship Manager* - [shannon@steelwindindustries.com](mailto:shannon@steelwindindustries.com)

Robert Czaplicki - *Senior Fab Estimator* - [robert@steelwindindustries.com](mailto:robert@steelwindindustries.com)



CELEBRATING 25 YEARS



AISC Sophisticated Paint Endorsement